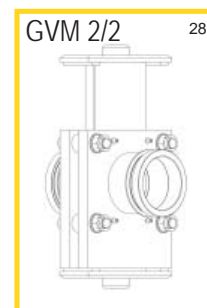


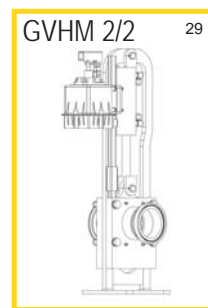
27

Additional **COMPONENTS** for A Complete Systems Approach

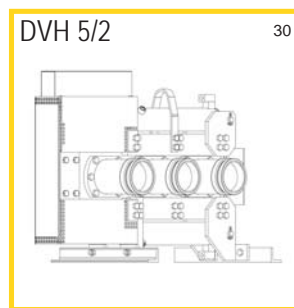
As a specialist in concrete and material placing equipment, Putzmeister offers additional components – everything your placing system needs to help you get the job done on time, and on budget.



GVM 2/2 28



GVHM 2/2 29



DVH 5/2 30

GATE and DIVERSION Valves

Gate valves and hydraulic diversion valves are completely leak-proof to meet modern pipeline requirements, while hydraulic diversion valves are also ideal for use with two or more delivery lines.



BSA Trailer Pumps

Convenient, powerful and durable, Putzmeister BSA High Pressure, High Performance Trailer Pumps are ideal for pumping concrete in high-rise applications. Featuring simple and reliable closed loop free flow hydraulics, the BSA Series provides smooth pumping of even the harshest mixes.



32

Boom Pipes

Wear-resistant boom pipes, reducers, elbows and pipe components from Esser Pipe Technology deliver strength and durability throughout the pipeline. Unmatched in the industry, Esser pipes last up to 10 times longer than conventional ST 52 steel pipes.



33

RV 7, RV 10 and RV 13 Deck Placers

A cost-effective solution for placing concrete when large surfaces obstruct a truck-mounted pump or other placing challenges arise. Putzmeister deck placers feature a boom radius up to 41 ft. (12.6m). Manually operated, the deck placers can be maneuvered into tight areas with a 360° articulating boom. Large areas up to 4,860 sq. ft. (450m²) can be covered from just one setup location. Lightweight and compact.



34

Large Scale Placing Booms

For challenging jobs that require even greater boom capabilities, Putzmeister can work with your specifications to achieve up to 164 ft. (50m) of horizontal reach. Special tower configurations or counterweight may be required.

PLACING SYSTEMS

ADVANTAGES:

- Project support from start to finish
- Highest reach above upper wedge point
- Square tower with modular design
- Simple bracing with vertical support
- Versatile pedestal
- Move entire system in under 10 minutes
- Highest freestanding heights
- No counterweight on booms
- Spacious platform
- Lightweight booms
- Multiple mounting and climbing configuration options



Putzmeister offers customer support 24 hours a day, every day. Our Customer Support hotline provides assistance for placing booms, boom pumps, Telebelts® and trailer pumps – as well as next-day delivery of over 20,000 in-stock parts. Product support is further enhanced by Putzmeister's worldwide subsidiaries and distributor network.

PLACING SYSTEMS

BOOMS, TOWERS AND ACCESSORIES



Putzmeister America, Inc.
1733 90th Street
Sturtevant, WI 53177 USA
www.putzmeister.com

Telephone (262) 886-3200
(800) 884-7210
Facsimile (262) 884-6338



35 Authorized Distributor



CP 4125 US

© Putzmeister America, Inc. 2010

Printed in the USA (3.51001)





Specializing in Customized APPLICATIONS

Ideal for demanding applications, such as high-rise buildings, treatment plants, precast plants, bridges

Ideal for Decks

- Allows larger pours due to speed of placement
- Cuts down size of placing crew
- Eliminates need for finishing crew overtime
- Reduces labor because no heavy hoses to drag over the deck, reinforcing and post tension cables
- Frees crane hook time for other tasks
- Promotes safety on deck
- Places concrete easily around or over obstacles
- Lets operator see placing crew and precisely adjust boom

Perfect for Walls and Columns

- Eliminates waste
- Frees crane hook time for other tasks
- Promotes safety - no wrestling with buckets
- Ensures better control of placing rate
- Eliminates shock loading of forms
- Provides minimum separation to promote a smoother finish
- Allows convenient placement in normally inaccessible areas
- Lets operator control boom at precise point of placement

Preferred for Precast Manufacturing

- Mounts directly to PM tower anchors on foundation - other mountings possible
- Uses only 16 sq. ft. (1.5m²) floor space
- Unfolds easily under low ceiling heights due to boom versatility
- Reaches over working traffic to efficiently place concrete into forms within buildings
- Allows continuous concrete placement
- Compresses job schedule
- Protects delivery line and power connections inside the tower

Putzmeister Placing Systems SPECIFICATIONS

| Reach/Boom | MX 24/28Z | MX 28/32Z | MX 32/36 | MX 32/36Z | MX 34/38Z | MX 36/40Z | MX 38/42* | MX 42/46Z* |
|--------------------------|----------------------------|----------------------------|----------------------------|----------------------------|----------------------------|----------------------------|----------------------------|---|
| Boom design | Multi-Z | Multi-Z | Roll-and-Fold | Multi-Z | Multi-Z | Multi-Z | Roll-and-Fold | Z-Fold |
| Horizontal reach | 78' 1" (23.80m) | 91' 10" (27.99m) | 105' 2" (32.05m) | 104' (31.70m) | 108' 7" (33.10m) | 115' 3" (35.13m) | 124' 8" (38.00m) | 138' 2" (42.00m) |
| Vertical reach** | 85' 3" (26.00m) | 99' 3" (30.26m) | 112' 5" (34.30m) | 111' 5" (33.96m) | 116' 4" (35.47m) | 122' 8" (37.39m) | 124' 8" (38.00m) | 138' 2" (42.00m) |
| Reach depth** | 58' 2" (17.73m) | 70' 1" (21.36m) | 82' 11" (25.28m) | 79' 3" (24.15m) | 84' 8" (25.81m) | 88' 4" (26.92m) | 107' 11" (32.89m) | - |
| Stowed boom length | 23' 4" (7.11m) | 26' 4" (8.04m) | 28' 11" (8.81m) | 29' (8.84m) | 31' 4" (9.55m) | 32' 4" (9.85m) | 33' 10" (10.31m) | - |
| Boom Sections | | | | | | | | |
| 1 st section | 23' (7.00m) | 26' (7.92m) | 28' 7" (8.71m) | 28' 8" (8.74m) | 28' 6" (8.69m) | 30' 10" (9.40m) | 33' 4" (10.16m) | 29' 2" (8.90m) |
| 2 nd section | 19' (5.80m) | 21' 11" (6.68m) | 25' 8" (7.82m) | 25' 3" (7.70m) | 25' 3" (7.70m) | 27' 7" (8.41m) | 30' 10" (9.40m) | 25' 11" (7.90m) |
| 3 rd section | 19' (5.80m) | 21' 11" (6.68m) | 25' 4" (7.72m) | 25' 4" (7.72m) | 27' 7" (8.41m) | 28' 8" (8.74m) | 30' 2" (9.19m) | 24' 7" (7.50m) |
| 4 th section | 17' 1" (5.20m) | 22' (6.71m) | 25' 7" (7.80m) | 24' 9" (7.54m) | 27' 3" (8.31m) | 28' 1" (8.56m) | 30' 4" (9.25m) | 27' 3" (8.30m) |
| 5 th section | - | - | - | - | - | - | - | 27' 11" (8.50m) |
| Boom Articulation | | | | | | | | |
| 1 st section | 90° | 99° | 98° | 103° | 103° | 102° | 95° | 94° |
| 2 nd section | 180° | 180° | 180° | 180° | 180° | 180° | 180° | 181° |
| 3 rd section | 250° | 266° | 180° | 246° | 245° | 245° | 180° | 180° |
| 4 th section | 248° | 265° | 247° | 234° | 233° | 233° | 251° | 245° |
| 5 th section | - | - | - | - | - | - | - | 234° |
| General Specs | | | | | | | | |
| Rotation | 365° | 365° | 365° | 365° | 365° | 365° | 365° | 365° |
| Pipeline diameter | 5" (127mm) | 5" (127mm) | 5" (127mm) | 5" (127mm) | 5" (127mm) | 4.6" (117mm) | 5" (127mm) | 5" (127mm) |
| Power | 400-480V/ 50-60Hz/35amp | 400-480V/ 50-60Hz/35amp | 400-480V/ 50-60Hz/35amp | 400-480V/ 50-60Hz/35amp | 400-480V/ 50-60Hz/35amp | 400-480V/ 50-60Hz/35amp | 440-480V/ 50-60Hz/35amp | Deutz TCD2013 Tier 3 270 hp (201kW) Engine |
| Control systems | Radio-Cable- Manual | Radio-Cable- Manual | Radio-Cable- Manual | Radio-Cable- Manual | Radio-Cable- Manual | Radio-Cable- Manual | Radio-Cable- Manual | Radio-Cable-Manual |
| Weights | | | | | | | | |
| Boom weight | 8,713 lbs (3952kg) | 12,591 lbs (5711kg) | 13,880 lbs (6296kg) | 13,239 lbs (6005kg) | 13,133 lbs (5957kg) | 13,144 lbs (5962kg) | - | - |
| Pedestal weight | 4,850 lbs (2200kg) | 4,850 lbs (2200kg) | 4,850 lbs (2200kg) | 4,850 lbs (2200kg) | 4,850 lbs (2200kg) | 4,850 lbs (2200kg) | - | - |
| Total approx weight | 13,563 lbs (6152kg) | 17,441 lbs (7911kg) | 18,730 lbs (8496kg) | 18,089 lbs (8205kg) | 17,983 lbs (8157kg) | 17,994 lbs (8162kg) | 24,500 lbs (11113kg) | - |

Series II weights Series I weights are shown above; add 920 lbs (417kg) to the pedestal to achieve Series II detach boom weights.

*This is a larger series model. Different features and new tower apply, contact Putzmeister for more details.
**Measured from bottom of pedestal for MX booms.

| Gate and Diversion Valves | | |
|---|--------------------|-----------------|
| Model | Maximum Pressure | Weight |
| GVM 2/2 – manual gate valve | 1885 psi (130 bar) | 132 lbs (60kg) |
| GVHM 2/2 – hydraulic or manual gate valve | 1885 psi (130 bar) | 165 lbs (75kg) |
| DVH 5/2 – hydraulic diversion valve | 1885 psi (130 bar) | 710 lbs (322kg) |

| Standard Features |
|--|
| • 5" (127mm) twin-pipe delivery line on all sections except 36/40Z which is 4.6" (117mm) twin-pipe |
| • 10 ft. (3m) end hose - coupled one end |
| • Modular boom controls (MBC) |
| • Combi electric switch box |
| • Centralized lube location |
| • Manual grease gun |
| • High quality paint finish - blue and cream |
| • World standard control panel |
| • Proportional cable remote with 130 ft. (40m) cable |
| • Emergency stop |
| • Operators manuals |

| Tower Specs Our pin tower system fits all MX Putzmeister booms. | |
|---|------------------------|
| Height Free stands up to 80' (24m) | 10' (3m)** |
| Width (Square) | 4' (1.22m) |
| Approx weight (incl. adapter) | 10,760 lbs (4880kg)*** |
| Floor opening (Square) | 4' 6" (1.37m) |

Adjustable in 10 ft. (3m) increments. *Weight varies with height.



ONE BOOM

Multiple Uses

Putzmeister placing systems give you total boom versatility, allowing you to take on more jobs than you thought possible. Even extreme applications can be easily tackled.

Our complete line of placing systems, from our placing booms and modular towers to our detach kit and accessories, maximize your truck-mounted boom flexibility and provide extra avenues of revenue generation.

With placing booms, you can place concrete faster, more uniformly and with pinpoint accuracy. Just as important, Putzmeister placing systems can help you save time and money with the quickest and easiest truck-to-tower

Putzmeister *PLACING SYSTEMS* around the world

Putzmeister placing systems have played a vital role in the construction of these landmarks: Hoover Dam Bypass, Burj Khalifa (formerly named Burj Dubai), Astoria, Hollywood & Vine – W Hotel & Residence, San Francisco – Oakland Bay Bridge, Skyline at MacArthur Place, Trump Ocean Club International Hotel & Tower – Panama®, Engia Costa Azul, New Orleans GIWW Bypass Gate, Hydro-Quebec Eastmain-1 Dam and Powerhouse, Wachovia Corporate Center, Tacoma Narrows Bridge and CityCenter™ Las Vegas. For more information on these and other high profile placing system projects, please visit the placing system section of our web site: www.putzmeister.com

Complete Systems Support from *START* to *FINISH*

At Putzmeister, we take a complete systems approach to your jobs. Our specialists work with you from the inception of a project to completion, including specifying equipment, consulting on concrete composition, and designing a system for maximum placing coverage. And whatever your equipment needs – from placing booms, towers and mounting and climbing configurations, to trailer pumps, boom pipes, gate and diversion valves and more – our comprehensive product line has you covered.

But we don't stop there, the support continues. We're there to support contractors by supplying information on unit placement, offering technical data, and ensuring our equipment performs to specifications. We even provide operator training when requested.

Our goal is the same as your goal: optimum efficiency on each job in terms of placement and the bottom line.

24/7 Support & Parts

Putzmeister offers customer support 24 hours a day, every day. Our Customer Support hotline provides assistance for placing booms, boom pumps, Telebelts® and trailer pumps – as well as next-day delivery of over 20,000 in-stock parts. Product support is further enhanced by Putzmeister's worldwide subsidiaries and distributor network.

Call (800) 890-0269

Putzmeister
Customer Support



Highest Reach Above Upper Wedge Point
 With up to a 46 ft. overhang (14m) before it's necessary to raise the boom, we offer the market's greatest height above the upper wedge point. Pour more floors with less jumps using our highly versatile support system. (Reference photo 7 below)

No Counterweight on Booms
 No labor intensive and cumbersome counterweight is needed with Putzmeister placing booms, saving time and labor. (Reference photo 6 below)

Spacious Platform
 Safety-conscious platform allows convenient chest height access to four-pin connection, making setup a breeze. Plus, the platform allows a bird's eye view for the operator. (Reference photo 6 below)

Easiest Boom to Raise and Move
 Our simple Hydraulic Quick Disconnect and easy four-pin connection make our boom the easiest to raise and move in the industry. Pick up and move the entire system in under ten minutes. (Reference photo 8 below)

Versatile Pedestal
 Our placing boom and pedestal are separate components so they can be moved together or individually, depending on the capacity of the crane on site. For easy reconnection, just lower the pedestal until the ears hit the lugs. The pedestal precisely aligns itself. (Reference photo 9 below)

Lightweight Boom
 Our low-weight placing booms provide lighter crane picks and allow the boom to be positioned farther from the crane for greater overall placing coverage. Plus, the highly versatile four- and five-section booms mean more effective reach. (Reference photo 9 below)

EXCLUSIVE Technology Stands

Putzmeister's commitment to innovation has produced the most advanced placing booms available. Our leading-edge engineering has developed many products with unique features that set our equipment apart. For example, our placing systems have the highest freestanding heights in the industry without counterweight.

This exclusive technology helps keep you on top of your jobs.

Square Tower with Modular Design

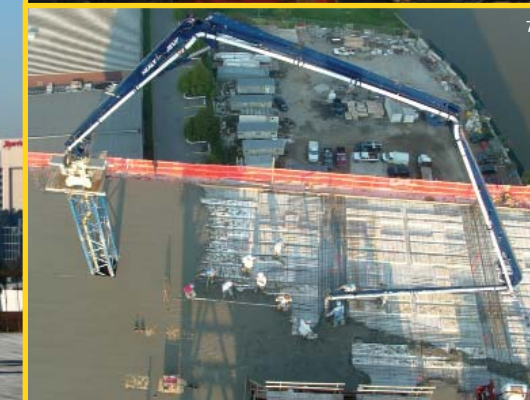
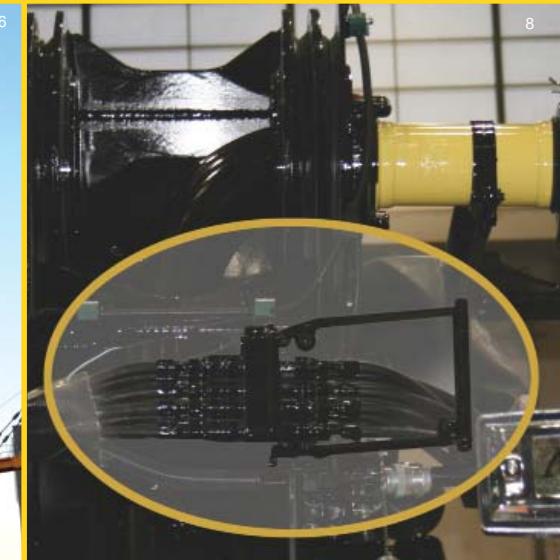
Putzmeister's modular high-strength square tower easily expands for use at a variety of heights and floor levels. It protects delivery line and power connections inside the tower, makes it easier to block out and patch floor openings, and allows for convenient inside ladder access. (Reference photo 5 at right)

Simple Bracing with Vertical Support

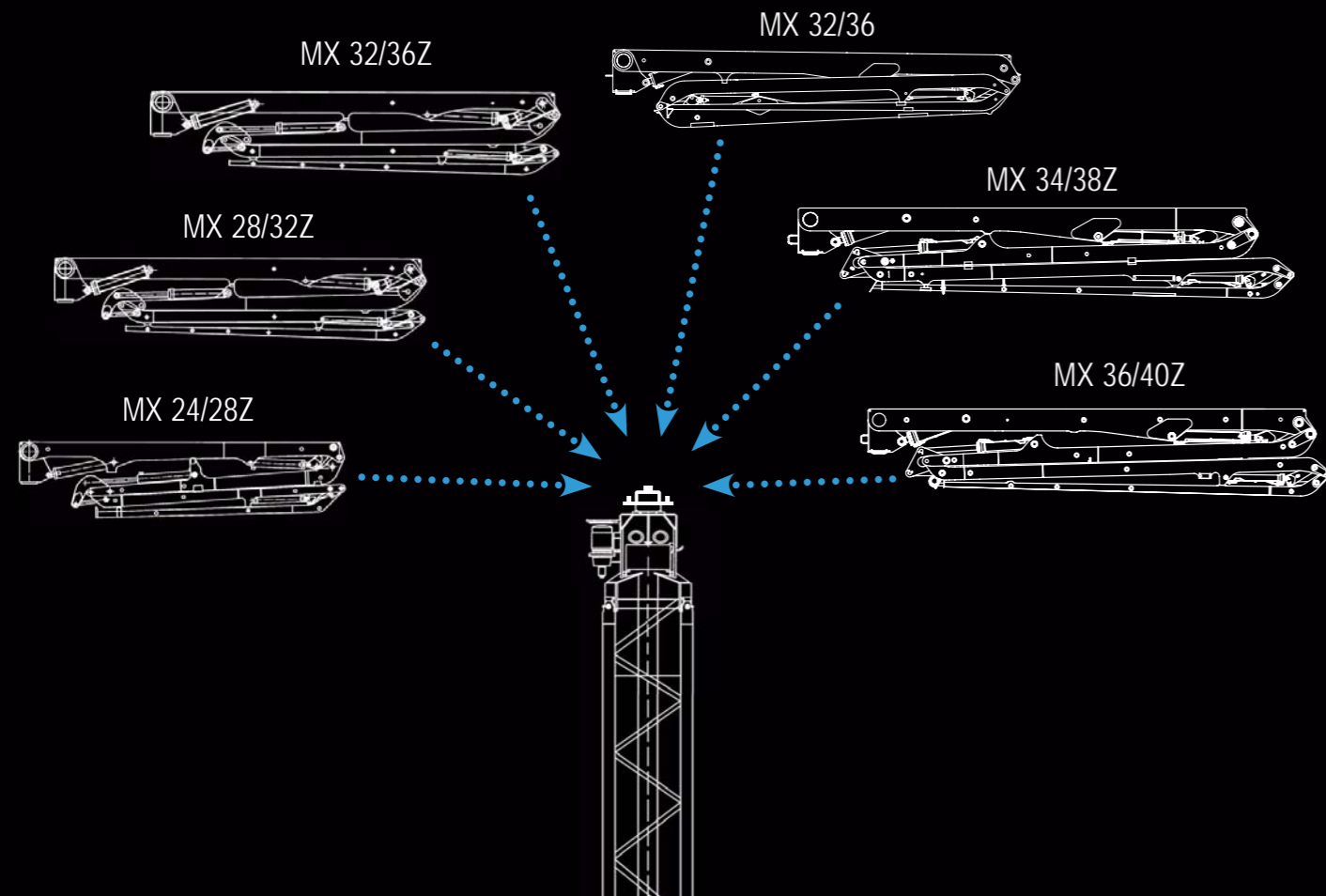
Putzmeister's vertical support system firmly supports the tower using hardwood or aluminum wedges for lateral bracing. This support option is available for use with our pin tower system. (Reference photo 4 at right)

Highest Freestanding Heights

Only Putzmeister towers can free stand up to 80 ft. (24m) heights without counterweight – the highest in the industry. (Reference photo 6 at right)



All placing boom models pin connect to the **SAME** pedestal and pin tower system for unmatched ease of use.



Easy Does It - EVERY TIME

Putzmeister's Series II Detach Boom is the fastest and easiest truck-to-tower conversion in the industry, bringing more efficiency to your time-sensitive jobs.

The quick detach kit, featuring our exclusive Hydraulic Quick Disconnect technology, is ideal for situations in which the boom must be frequently transferred. It allows the operator to couple and uncouple multiple hydraulic hoses simultaneously – in one simple motion – saving steps and time.

To reduce the flyweight by 4,850 lbs (2,220kg), the pedestal can be left on the tower.

Only Putzmeister gives you the flexibility to install the Series II kit on your initial boom pump order, or add at a later date. The Series II kit is adaptable to most Putzmeister pumps manufactured after 1985.

Move the Boom in **FOUR EASY STEPS**

Step 1:
Hydraulic Quick Disconnect



Step 2:
Detach boom and lift



Step 3:
Fly boom from truck to tower

Step 4:
Position, pin and pump

Pin Connect



Four heavy-duty pins in the pin system permit faster and easier connections when installing or raising the placing boom tower. The pin system gives you the flexibility to choose between a variety of mounting and climbing configurations.



Freestanding

Only Putzmeister reaches up to 80 ft. (24m) freestanding heights without counterweight.



Clamp Down Mounting Base

Clamps down to an existing structure or form framework. Used with or without a tower.

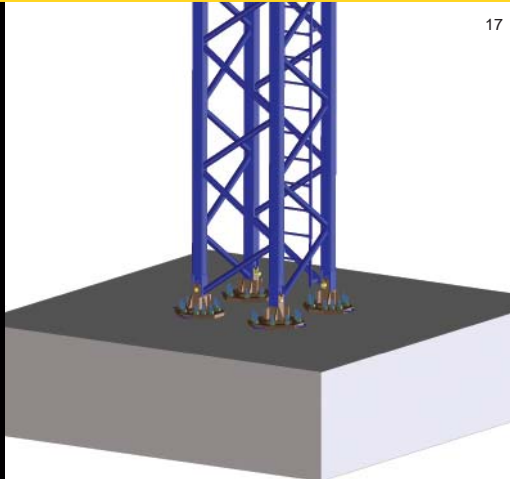
Inside Climbing

Supported by the building, the unit easily climbs via crane.



Foundation Base Plate

Convenient floor support plates for use with an existing concrete slab.



Hydraulic Climbing

The unit can climb without a crane using two lift cylinders and the pedestal's hydraulics.



Ballasted Base

An optional kit is available for freestanding applications without a foundation.



Adjustable Wall Bracket

Specially engineered, the wall bracket does not anchor to the forming system, avoiding form vibration.

Universal Tie Frame

The Universal Tie Frame, sometimes referred to as Outside Tie-In, secures the tower inside or outside the structure.



Mounting and Climbing VERSATILITY

Years of experience in designing placing systems for countless applications have resulted in Putzmeister's ability to offer an extremely efficient placing boom tower and the widest variety of mounting and climbing configurations.

Whatever your needs, Putzmeister has a system to meet your site's unique requirements.

Mounting

- Freestanding
- Foundation Base Plate
- Ballasted Base
- Clamp Down Mounting Base
- Adjustable Wall Bracket

Climbing

- Inside Climbing
- Hydraulic Climbing
- Universal Tie Frame